

Tanzsammlung Dahlhoff

Die "Tanzsammlung Dahlhoff" ist eine Notenhandschrift, die sich in der "Staatsbibliothek zu Berlin - Preußischer Kulturbesitz" befindet. Sie stammt eigentlich aus dem kleinen Kirchspiel Dinker in der Soester Börde (Kreis Welver). Zwischen 1767 bis 1799 wurde sie in der Küster- und Organistenfamilie Dahlhoff aufgeschrieben.

Wir haben es einer Gruppe von Folkmusikern zu verdanken, dass die 10 Büchlein (plus einiger loser Blätter) digitalisiert wurden. Die Staatsbibliothek stellt die [Abbildungen der Handschriften](#) unter der [Creative Commons Lizenz „Namensnennung / Keine kommerzielle Nutzung / Weitergabe unter gleichen Bedingungen 3.0 Deutschland“](#) jedermann zur Verfügung.

Aus Neugier habe ich mich durch die Bände gewühlt und sie dabei in moderne Notenschrift transkribiert. Dabei hatte ich natürlich auch die Hoffnung schöne Stücke für unsere Band Wüdneks Erben zu finden. Ich habe mich bemüht die Stücke so zu übertragen, dass sie dem Original weitgehend entsprechen, aber andererseits heutigen Lesegewohnheiten entgegen kommen.

Transkription

Im Original gibt es keine Voltenklammern, die sind z.T. aber nötig um das richtige Taktmaß zu erreichen. Manchmal habe ich sie auch eingesetzt um die Schreibweise zu verkürzen (mit 1.-3. und 2.-4. Klammer...). Außerdem war es manchmal nötig Noten zu verlängern oder zu verkürzen um die richtige Taktlänge zu erreichen. Diese Änderungen sind nicht im einzelnen angegeben, aber man kann es leicht in den Originalnoten nachlesen. Den Blick in die Originale möchte ich ausdrücklich empfehlen!

Von den Spielanweisungen habe ich nur die Triller übernommen. Bindebögen oder Phrasierungen sowie Da Capo-Angaben etc. wurden nicht übernommen.

Einige Stücke enden im Original am Ende der Seite mitten im Stück, das dann auf der nächsten Seite nicht weiter geht. Manchmal fehlen auch Noten, mal durch die Digitalisierung (geknickte Seiten), einen Tintenfleck, mehrfach verbessertes und damit nicht mehr leserliches... (Falls jemand die Noten rauslesen kann, so füge ich sie gerne ein). In dieser Transkription sind Stücke immer vollständig auf einer Seite notiert, man muss also nicht umblättern.

Ein früherer Bearbeiter des Originals hat alle Bände und Seiten durchnummeriert (außer dem 4. Band, der eine etwas andere Zählweise hat, siehe dort). Ich nutze für die Stücke die Nummern auf dem Blatt und *a, b, c* für die Reihenfolge von oben nach unten. *I, 27b* bezeichnet also das 2. Stück auf Seite 27 im 1. Band.

Auf Variationen desselben Stücks wird jeweils durch *vgl.* und Angabe der Stücknummer verwiesen. Sollte ein Stück tatsächlich genau gleich (oder lediglich in einer anderen Tonart) nochmal vorkommen so ist das mit einem = angegeben. Soweit bekannt und vorhanden sind an den Stücken weitere Stimmen (*Secondo*, *Bass*) als Verweis angegeben. In meiner Transkription überspringe ich *Secondo* und *Bass* an ihren Originalpositionen. Stattdessen gibt es separate Bände, in denen die mehrstimmigen Stücke notiert sind. Die Verweise sind so sortiert, dass oben die *Secondos* (*Sec*) und *Bass* stehen und drunter die Vergleiche (*vgl. / =*).

Die Veröffentlichung dieser Bearbeitung erfolgt ebenfalls unter der oben aufgeführten Lizenz.

Ich hoffe, dass hierdurch diese Musik vielen Musikern leichter zugänglich wird.

Spielt die Stücke und spielt mit ihnen, findet eure Lieblingsmelodien und bearbeitet sie, damit diese Musik lebendig bleibt!

Menuet

V, 1a

Two staves of musical notation for Menuet V, 1a. The key signature is one sharp (F#) and the time signature is 3/4. The first staff contains the main melody, and the second staff contains the accompaniment. A triplet of eighth notes is marked with a '3' at the end of the piece.

Menuet

V, 1b

Sec VI, 26a

Two staves of musical notation for Menuet V, 1b. The key signature is one sharp (F#) and the time signature is 3/4. The first staff contains the main melody, and the second staff contains the accompaniment.

Menuet 1

V, 2a

Sec IV, 19rb; VI, 30a; X, 35b
vgl. II, 46b; VII, 65a; VIII, 170b; X, 34b

Two staves of musical notation for Menuet 1 V, 2a. The key signature is one sharp (F#) and the time signature is 3/4. The first staff contains the main melody, and the second staff contains the accompaniment. Trills are marked with 'tr' above the notes.

Tantz

V, 2b

4 + 8
Takte

Two staves of musical notation for Tantz V, 2b. The key signature is one sharp (F#) and the time signature is 2/4. The first staff contains the main melody, and the second staff contains the accompaniment. The piece is marked with '4 + 8 Takte'.

Menuet 2

V, 3a

Sec VI, 36b; X, 35b; Bass B-Teil III, 94
= I, 78a; I, 140b; II, 58a; VII, 20b; VII, 57b; VIII, 174b; X, 34a; X, 84a; XI, 26b

Two staves of musical notation for Menuet 2 V, 3a. The key signature is one sharp (F#) and the time signature is 3/4. The first staff contains the main melody, and the second staff contains the accompaniment. A triplet of eighth notes is marked with a '3' at the end of the piece.

Tantz

V, 3b

Sec VI, 4a
= II, 47a; vgl. V, 7a; VII, 60a

Two staves of musical notation for Tantz V, 3b. The key signature is one sharp (F#) and the time signature is 2/4. The first staff contains the main melody, and the second staff contains the accompaniment.

Menuet 3

V, 4a

Two staves of musical notation for Menuet 3 V, 4a. The key signature is one sharp (F#) and the time signature is 3/4. The first staff contains the main melody, and the second staff contains the accompaniment.

Tanz
V, 4b

Sec VI, 4b
vgl. II, 47b; VII, 22b; VII, 58b; VIII, 171b

Two staves of music in G major and 2/4 time. The first staff contains the main melody with a repeat sign at the end. The second staff contains a rhythmic accompaniment with a repeat sign at the beginning.

Menuet 4
V, 5a

Sec VI, 38b

Two staves of music in G major and 3/4 time. The first staff contains the main melody with a repeat sign at the end. The second staff contains a rhythmic accompaniment with a repeat sign at the beginning.

Tanz
V, 5b

Sec IV, 30vb

Two staves of music in G major and 2/4 time. The first staff contains the main melody with a repeat sign at the end. The second staff contains a rhythmic accompaniment with a repeat sign at the beginning.

Menuet
V, 6a

Two staves of music in G major and 3/4 time. The first staff contains the main melody with a repeat sign at the end. The second staff contains a rhythmic accompaniment with a repeat sign at the beginning.

Tanz
V, 6b

Two staves of music in G major and 2/4 time. The first staff contains the main melody with a repeat sign at the end. The second staff contains a rhythmic accompaniment with a repeat sign at the beginning.

Tanz
V, 7a

vgl. V, 3b + Sec; II, 47a; VII, 60a

Two staves of music in G major and 2/4 time. The first staff contains the main melody with a repeat sign at the end. The second staff contains a rhythmic accompaniment with a repeat sign at the beginning.

Schwabisch
V, 7b

= VII, 26b; Sec VI, 29b

Two staves of music in G major and 3/4 time. The first staff contains the main melody with a repeat sign at the end. The second staff contains a rhythmic accompaniment with a repeat sign at the beginning.

Schwabisch

Sec IV, 30va; VI, 39a
vgl. VIII, 157b

V, 8a

Two staves of musical notation for 'Schwabisch V, 8a'. The key signature is one sharp (F#) and the time signature is 3/8. The first staff contains the main melody, and the second staff contains a second line of music, likely a bass line or a variation.

Schwabisch

V, 8b

Two staves of musical notation for 'Schwabisch V, 8b'. The key signature is one sharp (F#) and the time signature is 3/4. The first staff contains the main melody, and the second staff contains a second line of music.

Tantz

V, 9a

6 + 7
Takte

Two staves of musical notation for 'Tantz V, 9a'. The key signature is one sharp (F#) and the time signature is 2/4. The first staff contains the main melody, and the second staff contains a second line of music.

Menuet

V, 9b

Sec VI, 40b; VIII, 52b
vgl. II, 24; VII, 8a; VIII, 49a; VIII, 51b; VIII, 109a

Two staves of musical notation for 'Menuet V, 9b'. The key signature is one sharp (F#) and the time signature is 3/4. The first staff contains the main melody with a triplet of eighth notes. The second staff contains a second line of music with triplets.

Tantz (Sächs.)

V, 10a

Two staves of musical notation for 'Tantz (Sächs.) V, 10a'. The key signature is one sharp (F#) and the time signature is 2/4. The first staff contains the main melody, and the second staff contains a second line of music with triplets.

Tantz Feder Michel

V, 10b

4 + 8
Takte

Two staves of musical notation for 'Tantz Feder Michel V, 10b'. The key signature is one sharp (F#) and the time signature is common time (C). The first staff contains the main melody, and the second staff contains a second line of music.

Menuet Con Trio

V, 12b

Anfang fehlt
Trio

Two staves of musical notation for 'Menuet Con Trio V, 12b'. The key signature is one sharp (F#) and the time signature is 3/4. The first staff contains the main melody, and the second staff contains a second line of music.

Menuet Con Trio

V, 13

Sec V, 14; VI, 13
vgl. II, 9; VII, 158

Menuet

V, 15a

Menuet

V, 15b

Sec VI, 24b

Cour. Primo

V, 16a

Sec V, 16b; VI, 33a
= VII, 118a; VIII, 169a

Schwäbisch

V, 17a

Sec VI, 6b
= IV, 32rb; V, 54b; VII, 66b; IX, 38a

Schwäbisch

V, 17b

Sec VI, 43b; VI, 71b
vgl. VII, 30b; VII, 76b; VII, 90b

Boure

V, 18a

4 + 8
Takte

Boure

V, 18b

vgl. VIII, 173a; VIII, 173b

Menuet

V, 19

Menuet

V, 20

Vechsir Menuet

V, 21a

8 + 4 + 4
Takte

Aldenburger

V, 21b

Sec VI, 99
vgl. VIII, 128

Sächsische Rebel

V, 22a

Sec V, 22b; VI, 99a
vgl. VII, 167b; VIII, 127

Engl Conter Tantz

V, 23

Sec VI, 87
= IV, 31v; VIII, 125

Hollendisch

vgl. VIII, 134 dazu Sec VI, 91

V, 24

Musical score for 'Hollendisch' (V, 24) in G major, 3/4 time. It consists of three staves. The first staff is the melody with first and second endings. The second staff is the bass line. The third staff is a piano accompaniment with first and second endings. The key signature has one sharp (F#), and the time signature is 3/4.

Menuet Con Trio

Sec V, 26

V, 25

Musical score for 'Menuet Con Trio' (V, 25) in D major, 3/4 time. It consists of four staves. The first two staves are the melody and bass line, both featuring triplet markings. The third staff is labeled 'Trio' and is a piano accompaniment. The fourth staff is a piano accompaniment. The key signature has two sharps (F# and C#), and the time signature is 3/4.

Menuet Con Trio

V, 27

Musical score for 'Menuet Con Trio' (V, 27) in D major, 3/4 time. It consists of four staves. The first two staves are the melody and bass line, both featuring triplet markings. The third staff is labeled 'Trio' and is a piano accompaniment. The fourth staff is a piano accompaniment. The key signature has two sharps (F# and C#), and the time signature is 3/4.

Tantz

V, 28a

Musical score for 'Tantz' (V, 28a) in D major, 2/4 time. It consists of two staves. The first staff is the melody and the second staff is the bass line. The key signature has two sharps (F# and C#), and the time signature is 2/4.

Tantz

V, 28b

4 + 8
Takte

Musical score for 'Tantz' (V, 28b) in D major, 2/4 time. It consists of two staves. The first staff is the melody and the second staff is the bass line. The key signature has two sharps (F# and C#), and the time signature is 2/4.

Fechten Tantz

V, 29

8 + 12
Takte

Musical score for 'Fechten Tantz' in G major, 2/4 time. It consists of two staves. The first staff contains the main melody with a repeat sign and a double bar line. The second staff contains a bass line with two triplets marked with a '3' above them.

Clapper 6ken oder Wasch Tantz

V, 30

Sec VI, 98

vgl. VIII, 129

Musical score for 'Clapper 6ken oder Wasch Tantz' in G major, 2/4 time. It consists of three staves. The first staff is the main melody with a repeat sign. The second staff is a bass line with a repeat sign. The third staff is a bass line with a repeat sign and a double bar line.

Menuet Con Trio

V, 31

Musical score for 'Menuet Con Trio' in G major, 3/4 time. It consists of four staves. The first staff is the main melody with a repeat sign and a double bar line. The second staff is a bass line with a repeat sign and a double bar line. The third staff is a bass line with a repeat sign and a double bar line. The fourth staff is a bass line with a repeat sign and a double bar line. There are several triplets marked with a '3' below them.

Tantz

V, 32a

Sec VI, 19b

vgl. II, 23b; VII, 26a; VIII, 48b

Musical score for 'Tantz' in G major, 2/4 time. It consists of two staves. The first staff is the main melody with a repeat sign and a double bar line. The second staff is a bass line with a repeat sign and a double bar line. There are first and second endings marked '1. - 3.' and '2. - 4.' above the first staff.

Tantz

V, 32b

6 + 6
Takte

Musical score for 'Tantz' in G major, 2/4 time. It consists of two staves. The first staff is the main melody with a repeat sign and a double bar line. The second staff is a bass line with a repeat sign and a double bar line.

Menuet

V, 33a

Sec VI, 5b

Musical score for 'Menuet' in G major, 3/4 time. It consists of two staves. The first staff is the main melody with a repeat sign and a double bar line. The second staff is a bass line with a repeat sign and a double bar line.

Tanz
V, 33b

Two staves of music in G major and 2/4 time. The first staff contains the main melody, and the second staff contains a repeat section with two endings, labeled '1.' and '2.'.

Menuet
V, 34a

Sec V, 34b; VI, 5a

8 + 10
Takte

Two staves of music in G major and 3/4 time. The first staff contains the main melody, and the second staff contains the accompaniment.

Menuet
V, 35a

Sec V, 36a

Two staves of music in G major and 3/4 time. The first staff contains the main melody, and the second staff contains the accompaniment.

Menuet
V, 35b

Sec V, 36b; VI, 2a; VIII, 22; X, 115
vgl. II, 10; VIII, 21; X, 114

8 + 12
Takte

Two staves of music in G major and 3/4 time. The first staff contains the main melody with several triplet markings. The second staff contains the accompaniment, also with triplet markings. The word 'unleserlich' is written above the final triplet in the second staff.

Menuet
V, 37a

8 + 10
Takte

Two staves of music in G major and 3/4 time. The first staff contains the main melody, and the second staff contains the accompaniment. There are asterisks and the word 'unleserlich' above the final triplet in the second staff.

steht alternativ unten auf der Seite

Menuet
V, 37b

Two staves of music in G major and 3/4 time. The first staff contains the main melody, and the second staff contains the accompaniment.

Tanz
V, 38a

= VIII, 4a; VIII, 177a; IX, 18b

Two staves of music in G major and 2/4 time. The first staff contains the main melody, and the second staff contains the accompaniment.

Triller 6ken

V, 38b

4 + 7
Takte

Menuet

V, 39a

Sec V, 40a

Menuet

V, 39b

Sec VI, 22a

Menuet Primo

V, 40b

Bayerisch

V, 41a

Sec IV, 32vb

= I, 113b; II, 49b; VII, 64b

Tantz

V, 41b

Sec VI, 41b

= VII, 84a; VIII, 161a; vgl. VIII, 111

Bäuerchen

V, 42a

Sec VI, 8b

vgl. IV, 32ra; IV, 46rb

Tantz

V, 42b

Sec IV, 18vb; VI, 35a; Bass III, 103b

= II, 45b

4 + 6
Takte

Menuet Con Trio

V, 43

Sec V, 44; VI, 11; VIII, 26
vgl. V, 57; VII, 16; VIII, 25; VIII, 41; VIII, 45; IX, 17

Musical score for Menuet Con Trio V, 43. The piece is in G major and 3/4 time. It consists of four staves. The first two staves are the main melody, featuring several triplet markings. The third staff is labeled 'Trio' and provides a harmonic accompaniment. The fourth staff continues the accompaniment. The piece concludes with a repeat sign and two endings: a first ending that leads back to the beginning and a second ending that concludes the piece.

Menuet Con Trio

V, 45

Musical score for Menuet Con Trio V, 45. The piece is in G major and 3/4 time. It consists of four staves. The first two staves are the main melody. The third staff is labeled 'Trio' and provides a harmonic accompaniment. The fourth staff continues the accompaniment. The piece concludes with a repeat sign and a final cadence.

Bantissulbröde

V, 46

Musical score for Bantissulbröde V, 46. The piece is in G major and 2/4 time. It consists of three staves. The first two staves are the main melody, characterized by a fast, rhythmic pattern. The third staff provides a harmonic accompaniment. The piece concludes with a repeat sign and a final cadence.

Menuet

V, 47a

Musical score for Menuet V, 47a. The piece is in G major and 3/4 time. It consists of two staves. The first staff is the main melody, and the second staff provides a harmonic accompaniment. The piece concludes with a repeat sign and a final cadence.

Menuet

V, 47b

Sec VI, 58a
vgl. V, 50a

Musical score for Menuet V, 47b. The piece is in G major and 3/4 time. It consists of two staves. The first staff is the main melody, and the second staff provides a harmonic accompaniment. The piece concludes with a repeat sign and a final cadence.

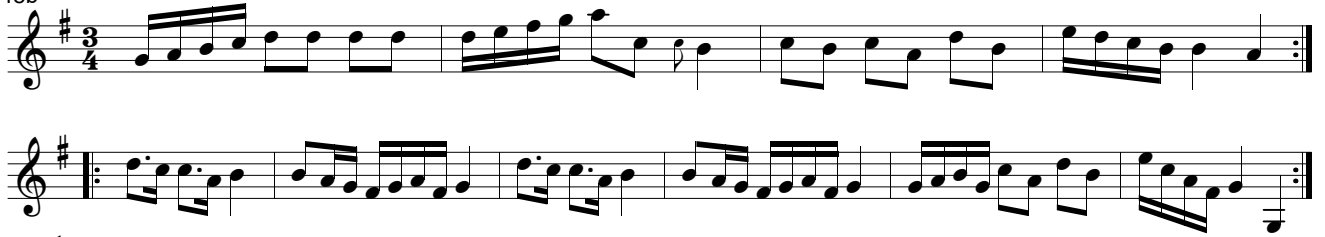
Polon:

V, 48a



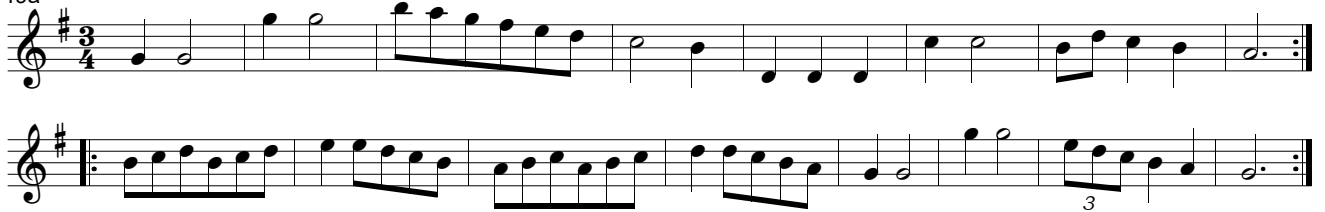
Polon:

V, 48b



Menuet

V, 49a

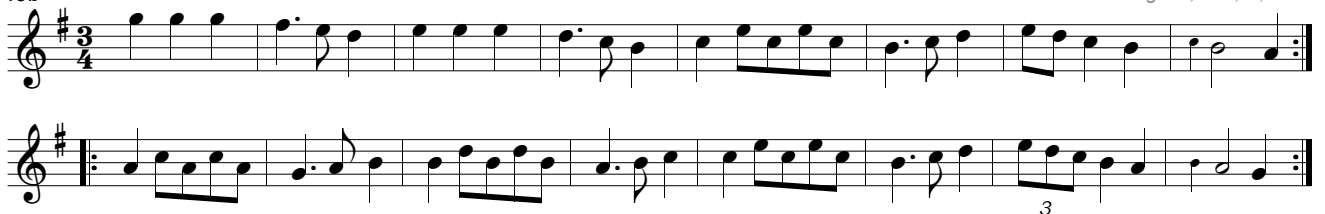


Menuet

V, 49b

Sec III, 12a; X, 91b

vgl. III, 11a; X, 90b

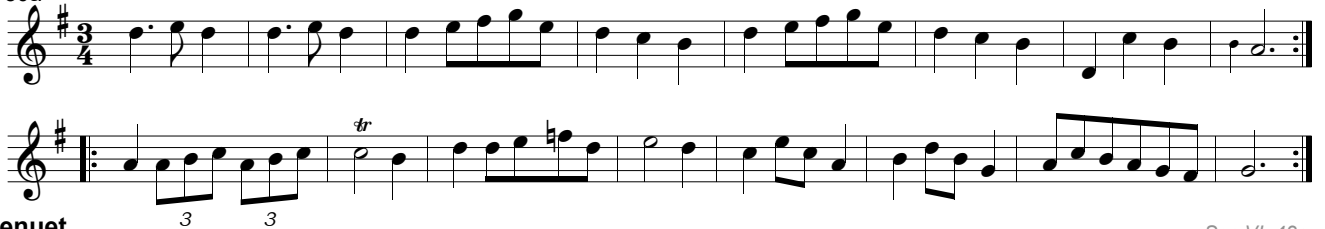


Menuet

V, 50a

Sec VI, 58a

vgl. V, 47b



Menuet

V, 50b

Sec VI, 42a



Menuet

V, 51



Damny Lisette

V, 52

Trio

Menuet

V, 53a

Sec VI, 19a; VII, 32b; X, 29a
= VII, 25b; VIII, 31b; IX, 5a; X, 28b; vgl. VII, 56a

1.-3. 2.-4.

Menuet

V, 53b

Sec VI, 22b

Polo.

V, 54a

Schwabisch

V, 54b

Sec VI, 6b
= IV, 32rb; V, 17a; VII, 66b; IX, 38a (Tonart)

Menuet

V, 55

Trio 1. 2. 1. 2.

Waltzer

V, 56

= II, 23a; VII, 190; VIII, 48a; VIII, 189a

Two staves of music in 3/4 time, key of B-flat major. The first staff begins with a treble clef and a key signature of one flat. The melody consists of eighth and sixteenth notes. The second staff continues the melody with similar rhythmic patterns.

Menuet

V, 57

Sec V, 44; VI, 11; VIII, 26
vgl. V, 43; VII, 16; VIII, 25; VIII, 41; VIII, 45; IX, 17

Three staves of music in 3/4 time, key of B-flat major. The first two staves contain the main melody with various rhythmic figures. The third staff is labeled 'Trio' and features a more melodic line with dotted rhythms.

Overböerchen Tanz

V, 58a

durchgestrichen, original keine Taktangaben vgl. V, 58b

Two staves of music in 2/4 time, key of B-flat major. The first staff has a treble clef and a key signature of one flat. The second staff includes a time signature change to 3/4 for the latter part of the piece.

Overböerchen Tanz

V, 58b

8 + 7
Takte

Two staves of music in 3/8 time, key of B-flat major. The first staff has a treble clef and a key signature of one flat. The second staff continues the melody with similar rhythmic patterns.

Menuet Primo

V, 59

Sec V, 60

Four staves of music in 3/4 time, key of D major. The first two staves contain the main melody. The third and fourth staves are labeled 'Trio' and feature triplets (marked with '3') and a trill (marked with 'tr').

...
V, 61a

Seite am vorderen Rand ausgerissen...

Two staves of musical notation for V, 61a. The top staff is in 3/4 time and the bottom staff is in 3/4 time. The key signature has one sharp (F#). The music consists of a series of eighth and quarter notes, ending with a double bar line.

...
V, 61b

Seite am vorderen Rand ausgerissen...

Two staves of musical notation for V, 61b. The top staff is in 3/8 time and the bottom staff is in 3/8 time. The key signature has two sharps (F# and C#). The music consists of a series of eighth and quarter notes, ending with a double bar line. A triplet of eighth notes is marked with a '3' below it.